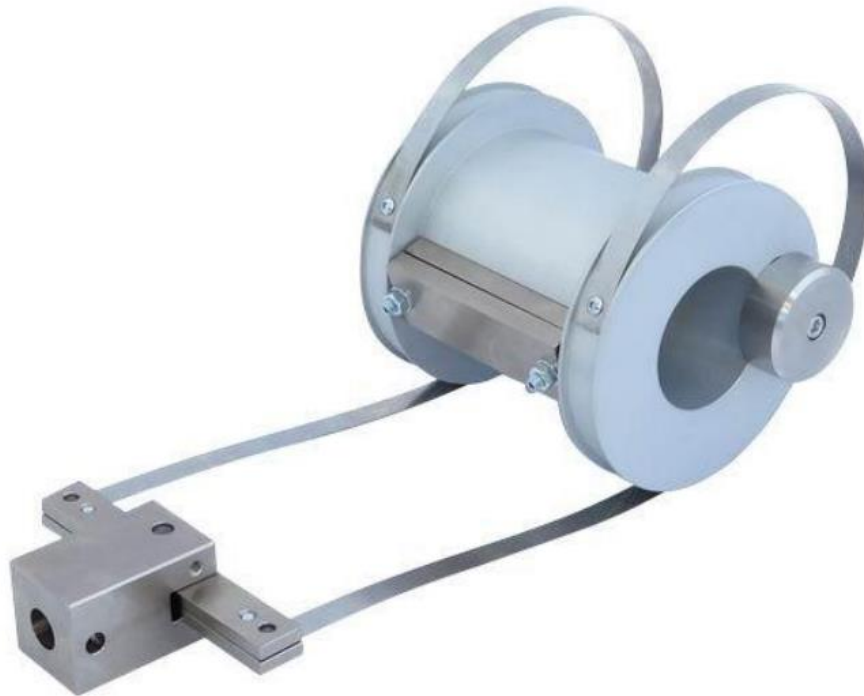




## ASTM D1781 Climbing Drum Peel Test Fixture



Max Capacity: 5kN/1,000 lbs.

Weight: 3kg – aluminum + steel

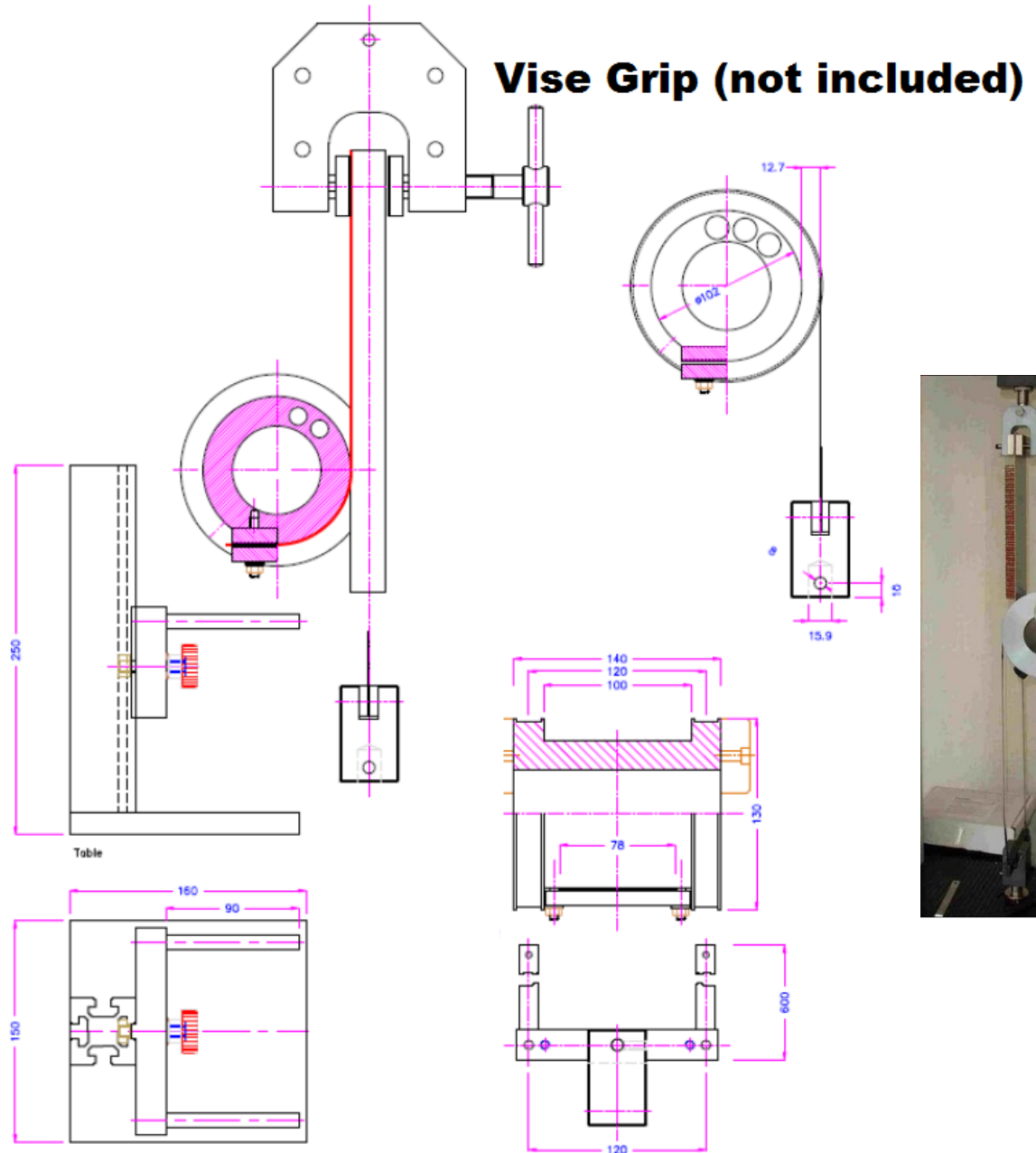
Sample Dimensions: Max sample width – 80mm

Standard 5/8" female coupling with 5/16" locking pin included

Drum diameter 102mm per ASTM D1781

**Note: Requires additional top fixture such as a vise grip to perform the pulling**

## Schematic (mm)



Optional: Adjustable Table – helps to start the test

