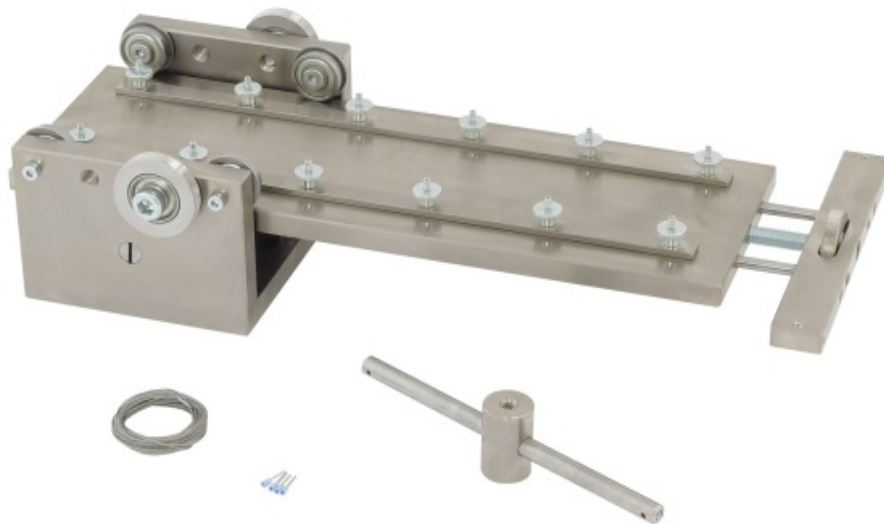


90 Degree Peel Test Fixture



Tensile Rating: 5kN or 1,225 lbs.

Test Area Length x Width: 280x50mm (other sizes available)

Surface Options: Glass, Steel, Plastic (not included)

Adapter Coupling: 5/8" with a 5/16" Locking Pin

The 90 degree peel fixture is described in several ASTM standards. The stage is spring loaded and rests in the "start" position. The stage moves sideways during the test to maintain the 90 degree peel angle. The mounting bar is situated behind the load cell as can be seen in the below diagrams. Custom designs are available.

Schematic (mm)

