



Shoulder Grips with Exchangeable Inserts



Tensile Rating: Up to 250kN (55,000 lbs.) Depending on Design

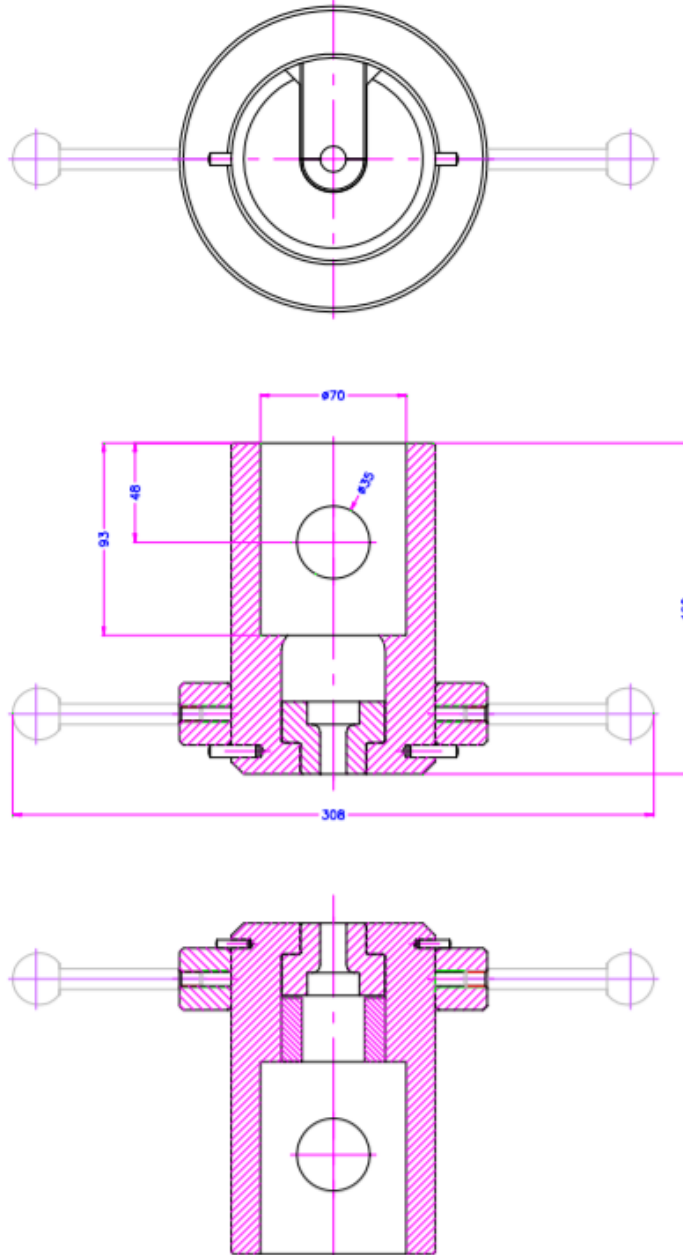
Sample Diameter: Typical is .25" to .5" – customer specified

Temperature Range: 0 to 70 Celsius (standard) or -70 to 280 Celsius(nickel plated)

Adapter/Coupling: Depending on Grip Size.

The shoulder grips with exchangeable inserts are the ideal solution for pulling multiple sizes of button-head style samples. This grip tests cylindrical rod specimens with a fat shouldered end and a reduced mid-section.

Schematic (mm)



Common Sample Sizes + Inserts(mm)

