

5kN Vise Grip – Extra Wide



Tensile Rating: 5kN or about 1,000 lbs.

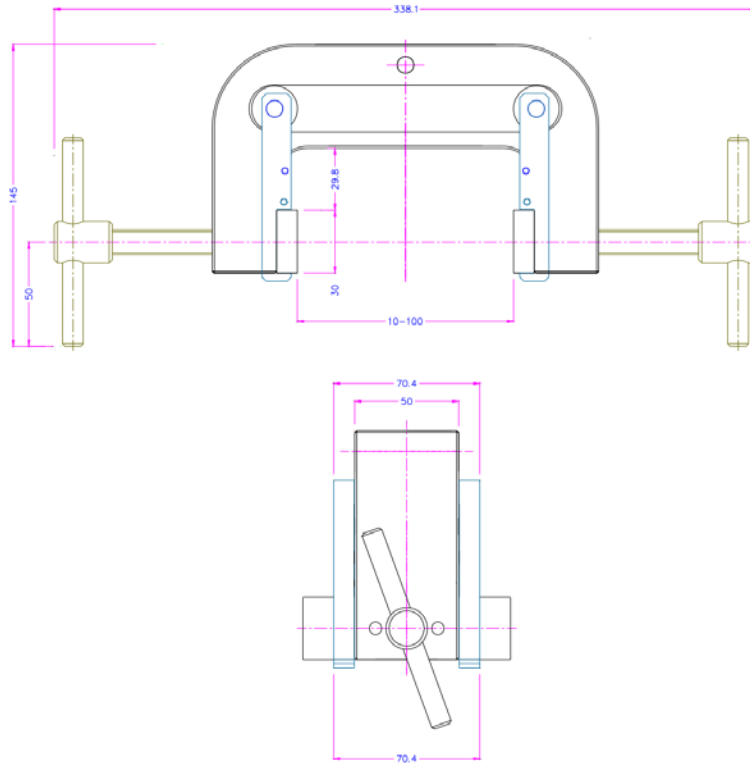
Sample Thickness: 10-100mm (fixture opening)

Sample Width: 30mm for flats, 4-10mm for rounds

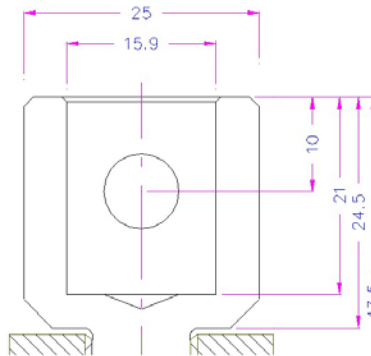
Adapter Couping: female 5/8" with 5/16" locking pin.

The extra wide vise grip is reinforced with support bars that run along an embedded channel. This gives the gives the grip more stability for the wider samples up to 100mm (just under 4")

Schematic (mm)



Female 5/8" 5/16" Locking Pin



Jaws: 1 set = 4 Jaws

Surface	Clamping HxW	Opening small	Opening med.	Opening large	Weight
Blank jaws	30x50 mm	0-30 mm	0-50 mm	-	0.22 kg
Rubber jaws	30x50 mm	0-28 mm	0-50 mm	-	0.22 kg
Pyramid jaws	30x50 mm	0-30 mm	0-50 mm	-	0.21 kg
V-jaws	30x50 mm	Ø 2-30 mm	Ø 2-50 mm	-	0.22 kg
V-jaws	30x50 mm	Ø 5-30 mm	Ø 5-50 mm	-	0.25 kg
Wave jaws	30x50 mm	0-30 mm	0-50 mm	-	0.20 kg
Diamond jaws	30x50 mm	0-30 mm	0-50 mm	-	0.22 kg
Blank jaws	30x80 mm	0-26 mm	0-48 mm	10-100 mm	0.43 kg
Rubber jaws	30x80 mm	0-24 mm	0-46 mm	8-98 mm	0.44 kg
Pyramid jaws	30x80 mm	0-26 mm	0-48 mm	10-100 mm	0.42 kg
Wave jaws	30x80 mm	0-26 mm	0-48 mm	10-100 mm	0.39 kg
Diamond jaws	30x80 mm	0-26 mm	0-48 mm	10-100 mm	0.43 kg
Blank jaws	30x100 mm	0-26 mm	0-48 mm	10-100 mm	0.54 kg
Rubber jaws	30x100 mm	0-24 mm	0-46 mm	8-98 mm	0.55 kg
Pyramid jaws	30x100 mm	0-26 mm	0-48 mm	10-100 mm	0.53 kg
Wave jaws	30x100 mm	0-26 mm	0-48 mm	10-100 mm	0.51 kg
Diamond jaws	30x100 mm	0-26 mm	0-48 mm	10-100 mm	0.54 kg

<p>Blank jaws</p> <ul style="list-style-type: none"> - Applicable for own further treatments - Steel blanks without coating 	
<p>Rubber jaws</p> <ul style="list-style-type: none"> - 1 mm rubber coating (NBR) - Nickel-plated 	
<p>Pyramid jaws</p> <ul style="list-style-type: none"> - Pyramids 1.2x45° - Hardened steel 58 HRC - Nickel-plated 	
<p>V-jaws</p> <ul style="list-style-type: none"> - For all kinds of round samples - Tooth pitch 1.2 mm - Hardened steel 58HRC - Nickel-plated 	
<p>Wave jaws</p> <ul style="list-style-type: none"> - For flexible materials - Wave 5 mm - Hardened steel 58HRC - Nickel-plated 	
<p>Diamond jaws</p> <ul style="list-style-type: none"> - Clamping surface coated with synthetic diamonds - Nickel-plated 	