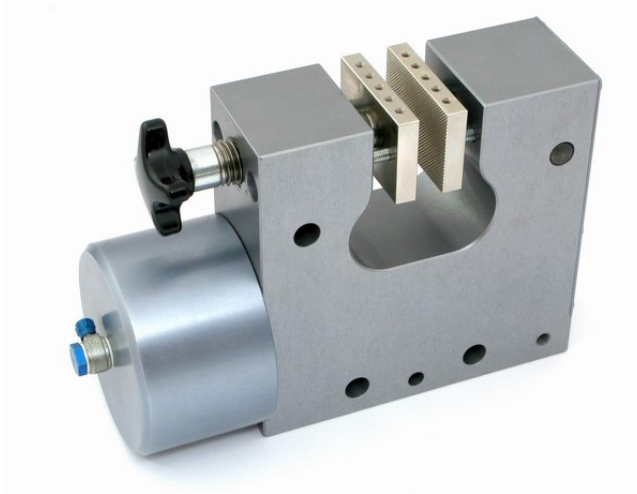


16kN Pneumatic Vise Grip



Clamping Force: 16kN at 7 bar – 36kN at 16 bar

Sample Thickness: 0-30mm by adjusting the piston.

Jaw Options: Serrated, Rubber, Smooth, Wave, Vee, Diamond, Water-Cooled

Pneumatic Coupling: Internal Thread coupling 1/8"

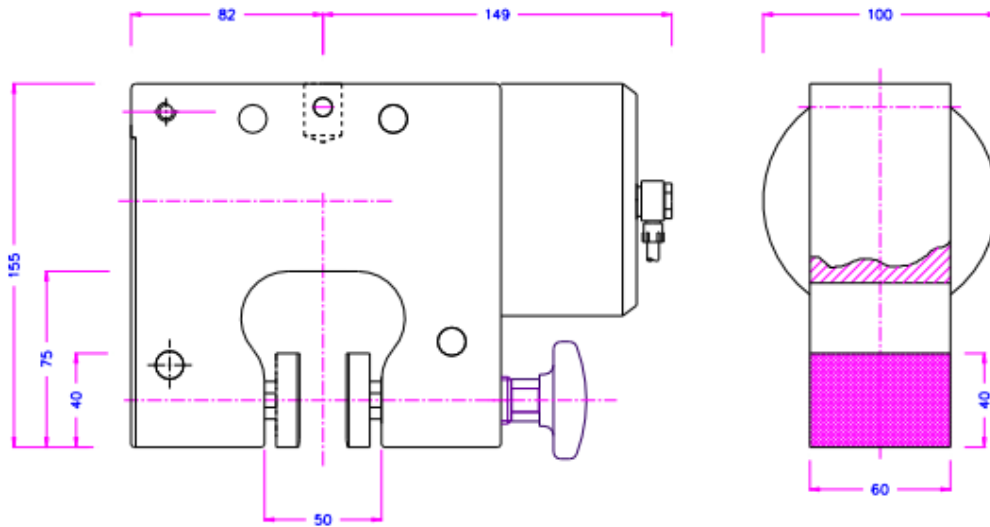
Adapter Coupling: 5/8" female with 5/16" locking pin

Weight: 4.5 kg per grip without Jaws

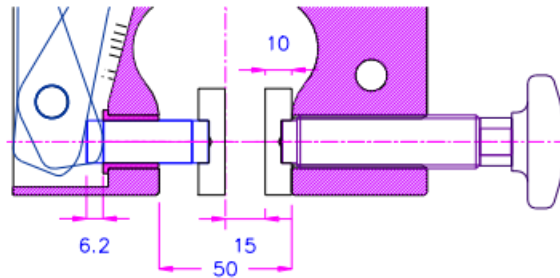
Please See the Pneumatic Grips Accessories Cut Sheet for more information on switches, pumps, and hoses. Customized solutions on grips and jaws are also available. Quick Jaws available for fast changeover.

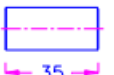
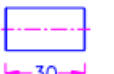


Schematic (mm)



Adjust Opening by switching the 3 Pistons (included)



- | | | |
|-------|---|---------------------|
| 0-5 |  | for samples 0-10mm |
| | 40 | |
| 5-10 |  | for samples 10-20mm |
| | 35 | |
| 10-15 |  | for samples 20-30mm |
| | 30 | |

Jaws

Surface	Clamping surface H x W	Opening*	Temperature range	Weight/ 1 pair
Blank jaws	40 x 60 mm	0 - 10 mm	+20 °C - +180°C	0.35 kg
Rubber coated jaws	40 x 60 mm	0 - 10 mm	- 70 °C - +70°C	0.36 kg
Pyramid jaws	40 x 60 mm	0 - 10 mm	- 70 °C - +180°C	0.33 kg
V-jaws	clamping height 40 mm	4 - 12 mm Ø	- 70 °C - +180°C	0.35 kg
V-jaws	clamping height 40 mm	6 - 30 mm Ø	- 70 °C - +180°C	0.34 kg
Wave jaws	40 x 60 mm	0 - 10 mm	- 70 °C - +180°C	0.40 kg
Diamond coated jaws	40 x 60 mm	0 - 10 mm	- 70 °C - +180°C	0.35 kg
Blank jaws	40 x 100 mm	0 - 10 mm	+20 °C - +180°C	0.72 kg
Rubber coated jaws	40 x 100 mm	0 - 10 mm	- 70 °C - +70°C	0.74 kg
Pyramid jaws	40 x 100 mm	0 - 10 mm	- 70 °C - +180°C	0.69 kg
Wave jaws	40 x 100 mm	0 - 10 mm	- 70 °C - +180°C	0.66 kg
Diamond coated jaws	40 x 100 mm	0 - 10 mm	- 70 °C - +180°C	0.72 kg
Wave jaws	60 x 200 mm	0 - 10 mm	0 °C - +180°C	3.00 kg



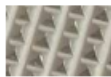
Blank jaws

- Suitable for own further treatments
- Steel blanks without coating



Rubber jaws

- 1 mm rubber coating (NBR)
- Nickel-plated



Pyramid jaws

- Pyramids 1.2x45
- Hardened steel 58HRC
- Nickel-plated



V-jaws

- For all round samples
- Tooth pitch 1.2 mm
- Hardened steel 58HRC
- Nickel-plated



Wave jaws

- For flexible materials
- Wave 5 mm
- Hardened steel 58HRC
- Nickel-plated



Diamond jaws

- Clamping surface coated with synthetic diamonds
- Nickel-plated

Quick Change Jaws

Surface	Clamping surface H x W	Opening*	Temperature range	Weight/ 1 pair
Carrier	-	-	- 70 °C - +180°C	0.33 kg
Blank inset jaws	50 x 60 mm	0-9 mm	+20 °C - +180°C	0.29 kg
Rubber coated inset jaws	50 x 60 mm	0-9 mm	- 70 °C - +70°C	0.30 kg
Pyramid inset jaws	50 x 60 mm	0-9 mm	- 70 °C - +180°C	0.28 kg
Wave inset jaws	50 x 60 mm	0-9 mm	- 70 °C - +180°C	0.26 kg
Diamond coated inset jaws	50 x 60 mm	0-9 mm	- 70 °C - +180°C	0.29 kg
Carrier	-	-	- 70 °C - +180°C	0.69 kg
Blank inset jaws	50 x 100 mm	0-9 mm	+20 °C - +180°C	0.63 kg
Rubber coated inset jaws	50 x 100 mm	0-9 mm	- 70 °C - +70°C	0.65 kg
Pyramid inset jaws	50 x 100 mm	0-9 mm	- 70 °C - +180°C	0.60 kg
Wave inset jaws	50 x 100 mm	0-9 mm	- 70 °C - +180°C	0.57 kg
Diamond coated inset jaws	50 x 100 mm	0-9 mm	- 70 °C - +180°C	0.63 kg