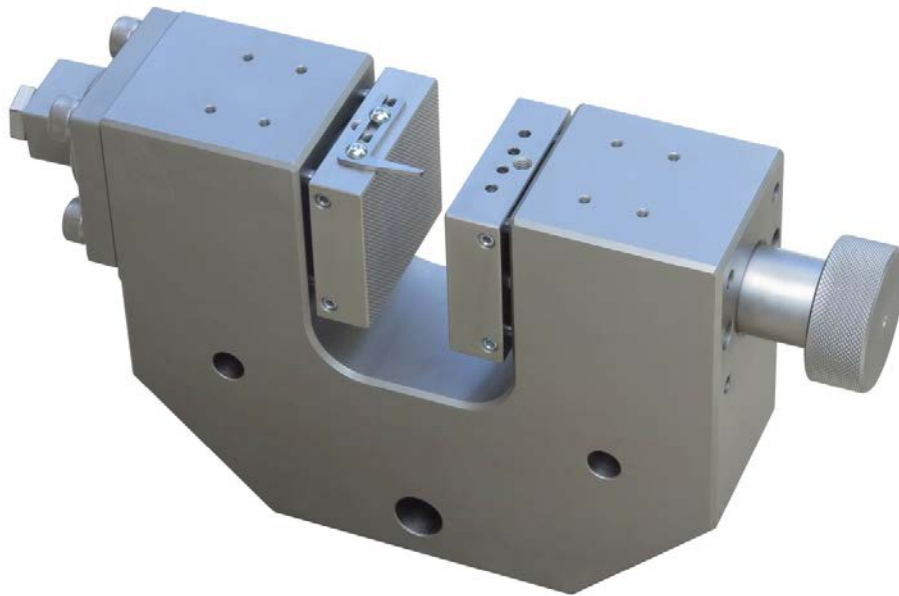




## 60kN Hydraulic Vise Grips



Clamping Force: 60kN or slightly more (depending on pressure)

Construction Material: Nickel Plated A6 tool steel

Hydraulic Cylinder: 50mm diameter, with automatic spring return, 15mm stroke

Hydraulic connection: 1/4"

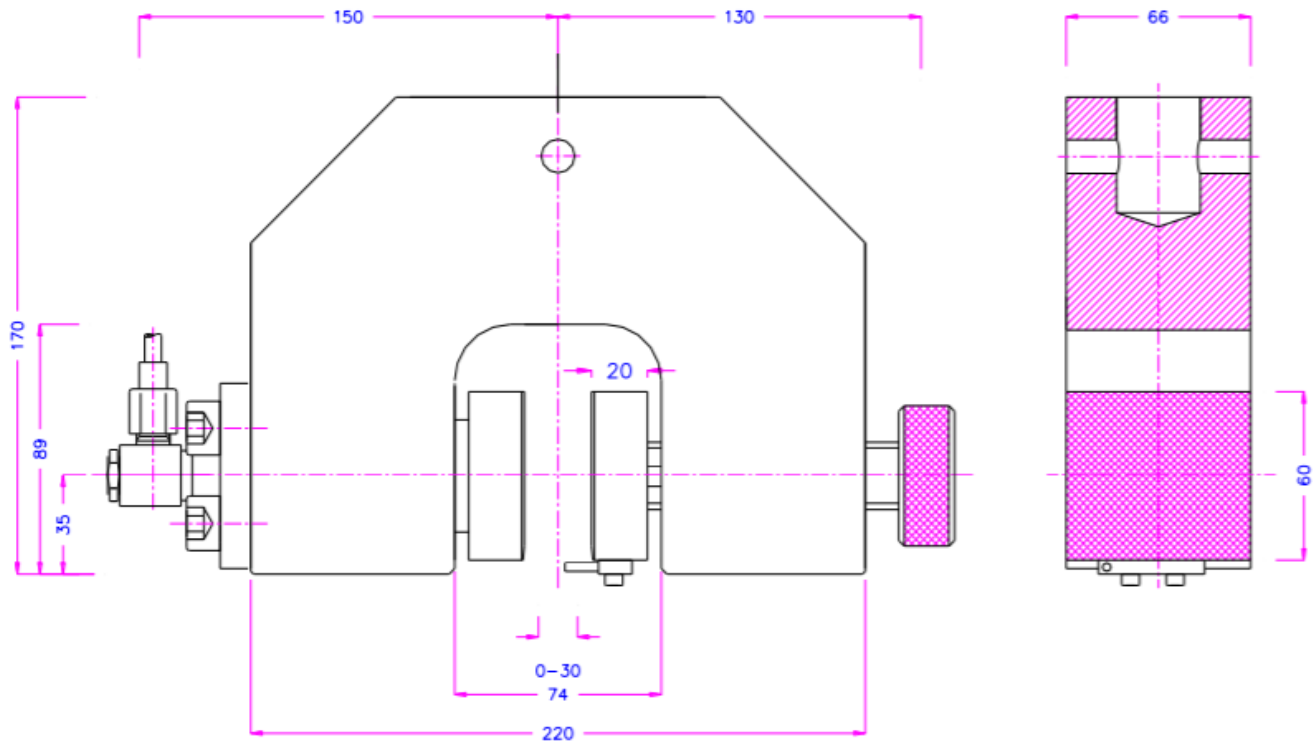
Temperature Rating: 0-70C, or -30 to +100C, or -10 to +200C

Weight: 15kg (without jaws)

Adapter Couping: 1.25" female with 1/2" locking pin or custom

**Notes:** Works with most hydraulic systems. Universal Grip recommends the "P2" pneumatic over hydraulic pump system.

## Schematic (mm)



Scope of supply: 1 set = 4 jaw faces

Clamping surface	Clamping surface H x W	Opening	Weight / 1 pair
Blank jaw faces	60 x 66 mm	0 - 30 mm	Ca. 1.2 kg
Pyramid jaw faces	60 x 66 mm	0 - 30 mm	Ca. 1.2 kg
V-jaws	Clamping height 60 mm	8 - 30 mm Ø	Ca. 1.2 kg
Wave jaw faces	60 x 66 mm	0 - 20 mm	Ca. 1.2 kg
Diamond-coated jaws	60 x 66 mm	0 - 30 mm	Ca. 1.2 kg
Diamond-coated V-jaws	Clamping height 60 mm	8 - 30 mm Ø	Ca. 1.2 kg
Blank jaw faces	70 x 210 mm	0 - 10 mm	Ca. 6.7 kg
Wave jaw faces	70 x 210 mm	0 - 10 mm	Ca. 6.7 kg

Additional jaws (dimensions and surface coatings) available on request

## Accessories:



### P2

Air hydraulic pump

Max pressure: 350 bar, pressure ratio air: hydraulic 1:61

2 valves for separate switching of the grips (opening, closing)

Remote control with 2 switches; ca. 220 V ; 0.1 A

Dimensions L x W x H: 315 x 250 x 500 mm); weight ca. 25 kg



### P2+G+a

Air hydraulic pump :

- Housing for noise reduction

- Analogue pressure transducer: analogue signal 1 -10 V to adjust the clamping pressure from 40 to 400 bar

Dimensions L x W x H: 720 x 360 x 630 mm; weight: ca. 38 kg



### P2+2+G+a

Air hydraulic pump

- 4 valves to lock the jaws at any required position

- Housing for noise reduction

- Analogue pressure transducer: analogue signal 1 -10 V to adjust the clamping pressure from 40 to 400 bar

Dimensions L x W x H: 720 x 360 x 630 mm; weight: ca. 50 kg