

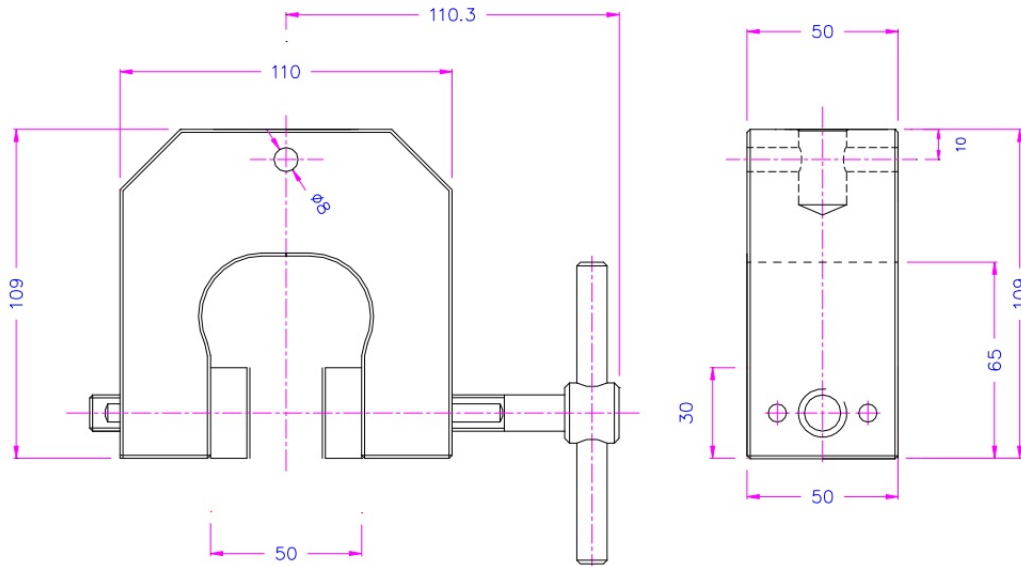
5kN Vise Grips - (1,000lbs)



Jaws = 1 set = 4 Jaws

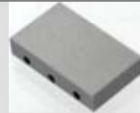
Surface	Clamping HxW	Opening small	Opening med.	Opening large	Weight
Blank jaws	30x50 mm	0-30 mm	0-50 mm	-	0.22 kg
Rubber jaws	30x50 mm	0-28 mm	0-50 mm	-	0.22 kg
Pyramid jaws	30x50 mm	0-30 mm	0-50 mm	-	0.21 kg
V-jaws	30x50 mm	Ø 2-30 mm	Ø 2-50 mm	-	0.22 kg
V-jaws	30x50 mm	Ø 5-30 mm	Ø 5-50 mm	-	0.25 kg
Wave jaws	30x50 mm	0-30 mm	0-50 mm	-	0.20 kg
Diamond jaws	30x50 mm	0-30 mm	0-50 mm	-	0.22 kg
Blank jaws	30x80 mm	0-26 mm	0-48 mm	10-100 mm	0.43 kg
Rubber jaws	30x80 mm	0-24 mm	0-46 mm	8-98 mm	0.44 kg
Pyramid jaws	30x80 mm	0-26 mm	0-48 mm	10-100 mm	0.42 kg
Wave jaws	30x80 mm	0-26 mm	0-48 mm	10-100 mm	0.39 kg
Diamond jaws	30x80 mm	0-26 mm	0-48 mm	10-100 mm	0.43 kg
Blank jaws	30x100 mm	0-26 mm	0-48 mm	10-100 mm	0.54 kg
Rubber jaws	30x100 mm	0-24 mm	0-46 mm	8-98 mm	0.55 kg
Pyramid jaws	30x100 mm	0-26 mm	0-48 mm	10-100 mm	0.53 kg
Wave jaws	30x100 mm	0-26 mm	0-48 mm	10-100 mm	0.51 kg
Diamond jaws	30x100 mm	0-26 mm	0-48 mm	10-100 mm	0.54 kg

Schematic (mm)



Blank jaws

- Applicable for own further treatments
- Steel blanks without coating



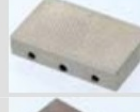
Rubber jaws

- 1 mm rubber coating (NBR)
- Nickel-plated



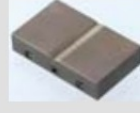
Pyramid jaws

- Pyramids 1.2x45°
- Hardened steel 58 HRC
- Nickel-plated



V-jaws

- For all kinds of round samples
- Tooth pitch 1.2 mm
- Hardened steel 58HRC
- Nickel-plated



Wave jaws

- For flexible materials
- Wave 5 mm
- Hardened steel 58HRC
- Nickel-plated



Diamond jaws

- Clamping surface coated with synthetic diamonds
- Nickel-plated

