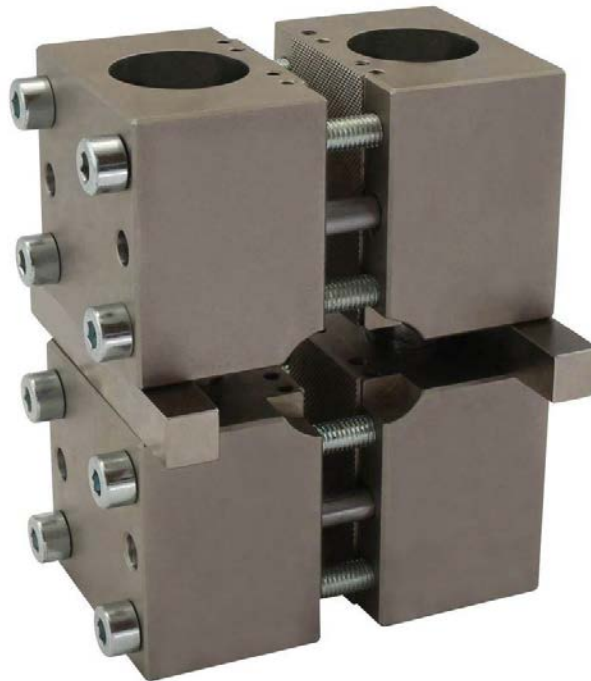


## ASTM D6641 Combined Loading Compression Fixture



Compression Rating: 100kN (22,500 lbs.)

Weight: Steel – 6kg

Jaws: Embedded jaws with serrated surface

Scope of Delivery: 1 fixture including two .5x.5” alignment bars

Adapter/Coupling: This fixture is compressed between two fixed compression platens.

## Schematic (mm)

