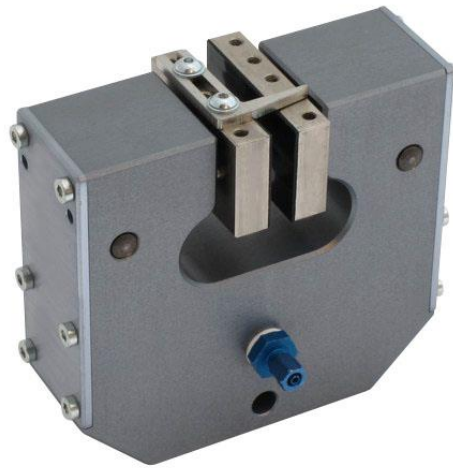




## 2.4kN Centric Pneumatic Vise Grip



**Clamping Force:** 2.4kN at 7 bar, Max - 5.4kN at 16 bar

**Opening:** 0-7mm or 4-11mm, Depends on Jaws, see below

**Jaw Options:** Serrated, Rubber, Smooth, Wave, Vee, Diamond – see below

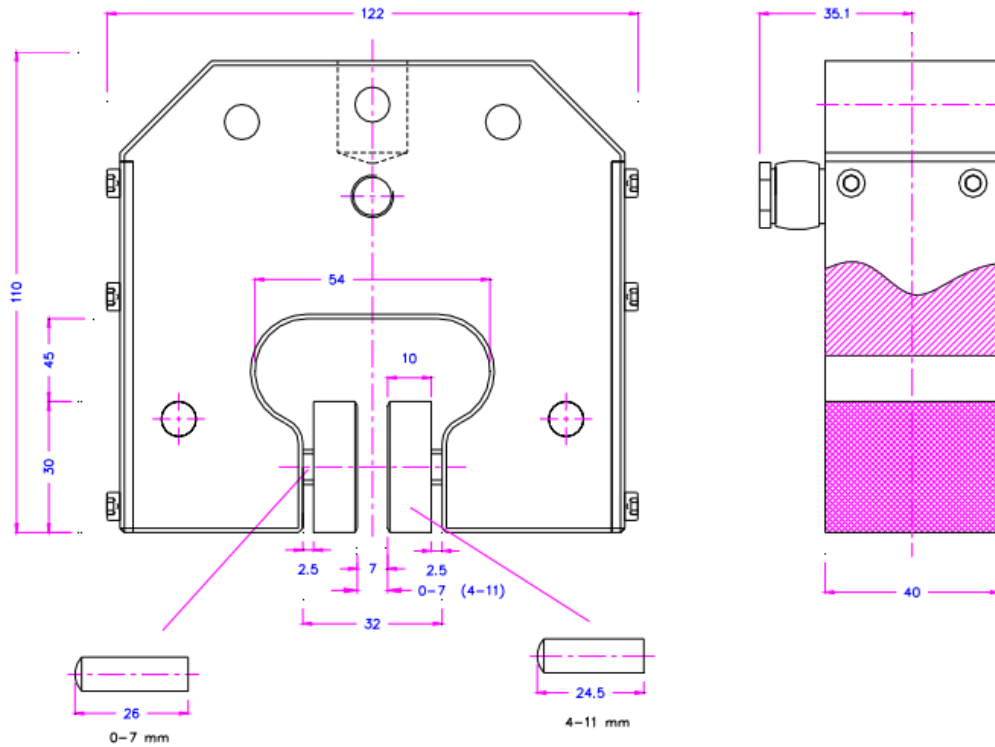
**Pneumatic Coupling:** Internal Thread coupling 1/8"

**Adapter Coupling:** 5/8" female with 5/16" locking pin

**Weight:** 1.21 kg per grip without Jaws

Please See the Pneumatic Grips Accessories Cut Sheet for more information on switches, pumps, and hoses. Customized solutions on grips and jaws are also available. Quick Jaws available for fast changeover.

## Schematic (mm)



## Jaws

Surface	Clamping surface	Opening with	Opening with	Weight per pair
Blank jaws	30 x 50 mm	0 - 7 mm	4 - 11 mm	0.22 kg
Rubber jaws	30 x 50 mm	0 - 5 mm	2 - 9 mm	0.22 kg
Pyramid jaws	30 x 50 mm	0 - 7 mm	4 - 11 mm	0.22 kg
V-jaws	Height 50 mm	4 - 7 mm $\emptyset$	4 - 11 mm $\emptyset$	0.18 kg
Wave jaws	30 x 50 mm	0 - 7 mm	4 - 11 mm	0.20 kg
Diamond jaws	30 x 50 mm	0 - 7 mm	4 - 11 mm	0.22 kg



**Blank jaws**

- Suitable for own further treatments
- Steel blanks without coating



**Rubber jaws**

- 1 mm rubber coating (NBR)
- Nickel-plated



**Pyramid jaws**

- Pyramids 1.2x45
- Hardened steel 58HRC
- Nickel-plated



**V-jaws**

- For all round samples
- Tooth pitch 1.2 mm
- Hardened steel 58HRC
- Nickel-plated



**Wave jaws**

- For flexible materials
- Wave 5 mm
- Hardened steel 58HRC
- Nickel-plated



**Diamond jaws**

- Clamping surface coated with synthetic diamonds
- Nickel-plated