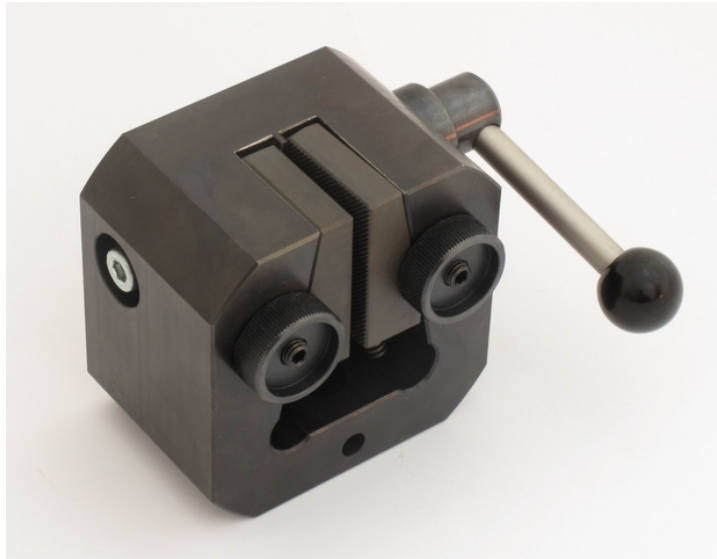




Mechanical Wedge Grips – 20kN



Max Capacity: 20kN/4.5K lbs.

Weight: 3.8kg each - steel

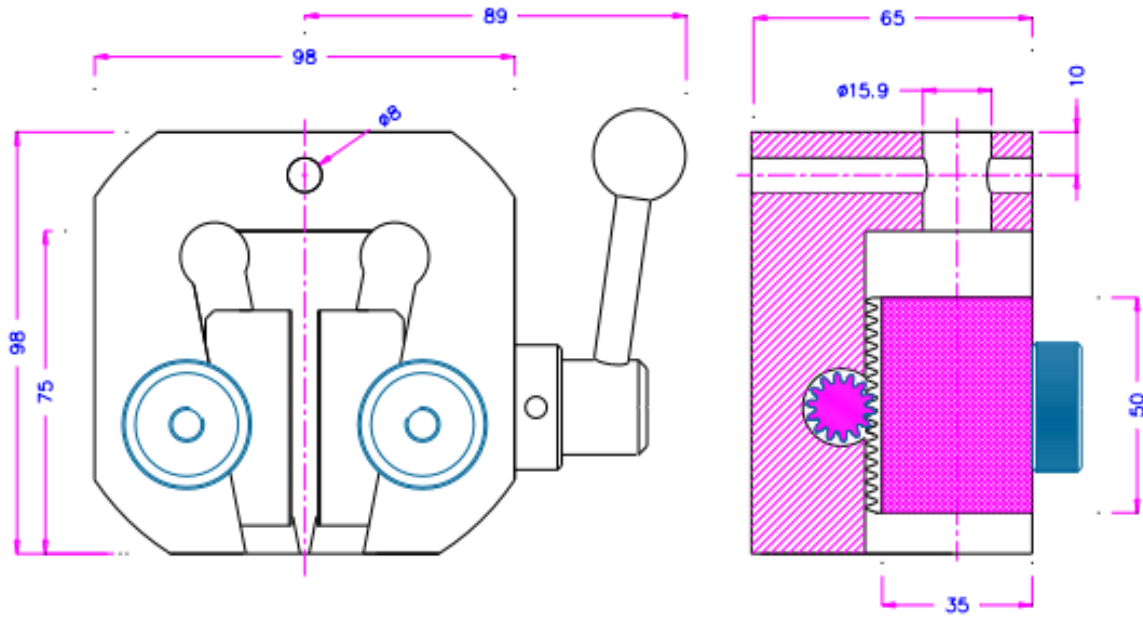
Sample Dimensions: Based on Jaw Options – See below

5/8" female coupling, includes 2 5/16" locking pins.

High temperature Nickel plated versions available

Option for serrated jaws for flat samples or V jaw inserts for round samples

Schematic (mm)



Surface	Clamping surface H x W	Opening	Weight per pair
Pyramid (serrated) jaws	50 x 35mm	0 - 13mm	0.48 kg
Pyramid (serrated) jaws	50 x 35mm	4 - 16mm	0.41 kg
V-jaws	Clamping height 50mm	3 - 13mm Ø	0.46 kg
V-jaws	Clamping height 50mm	4 - 16mm Ø	0.41 kg
V-jaws	Clamping height 50mm	10 - 20mm Ø	0.35kg